

CoreStation RX660

High Performance Remote Workstation



Features and Benefits

Key Features:

- Secure anywhere, anytime remote access to a high-performance workstation
- Dual Intel Xeon 4th and 5th Gen CPUs up to 64 cores
- NVIDIA professional RTX GPUs
- Windows Desktop OS options
- Hot-swap redundant power supplies, fans, and local storage
- Out-of-band management

Remote Access

- Support for multiple remote display protocols to deliver a true workstation experience from any location
- Remote connections can be local, across country or continent-to-continent
- Offload protocol compression to GPU to free valuable resources
- Support for Amulet Hotkey thin clients and trusted zero clients

Management & Reliability

- Embedded hardware management and intelligent provisioning with iDRAC
- Single pane of glass with Dell OpenManage integration with Microsoft, Broadcom, ServiceNow, RedHat Ansible

High-performance, dual processor, GPU accelerated remote workstations to deliver secure access anywhere

Workloads vary in every business, creating different requirements from their workstations. CoreStation RX660 is highly configurable to meet those needs and requirements.

Single or Dual Intel Xeon ‘Sapphire Rapids’ 4th and ‘Emerald Rapids’ 5th Gen processors with up to 64 total cores and 32 channels of DDR5 memory with ECC, provide the performance to handle the most demanding sustained workloads and largest datasets.

Whether you prefer to work locally using the hot-swap front storage drives with RAID or over the network using 25Gbit/s links to remote storage, RX660 has a configuration which provides access to your data at the highest speed.

Workstation graphics is provided by NVIDIA RTX Professional GPUs, depending on what best fits your application. Alternatively, RX660 can be configured with up to two Datacenter GPUs from NVIDIA or Intel use with hardware accelerated virtual machines.

Data center optimized for scalability and reliability

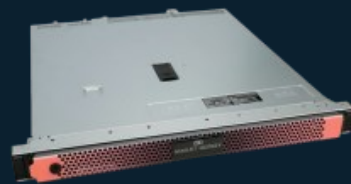
If you are looking for a higher-performance companion to an existing VDI solution, RX660 easily integrates with a wide range of existing remote session brokers including Citrix, Horizon and Leostream, avoiding the need to manage VDI and 1:1 users differently.

To maximize uptime and reduce the need for time-sensitive servicing, ECC memory, RAID storage, redundant power supplies and customised fan control allow the user to continue working, even in the rare event of a hardware failure. Enterprise out-of-band management with Dell iDRAC makes it simple to install, setup, manage and maintain the workstation, even when deployed in a remote location with no easy access.

Dell OpenManage suite enables a whole deployment of RX660 workstations to be managed together, simplifying system updates, preventative maintenance and reducing downtime.

CoreStation RX660

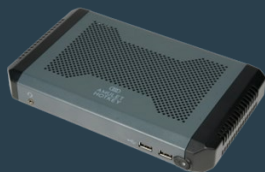
Compact Performance Remote Workstation



Related Products

DX Enterprise Thin Clients

To connect to your remote workstation, your end users require a client device. Amulet Hotkey 5th Gen DX1500 and DX1700 clients deliver an end-to-end solution with a range of thin client devices built with the enterprise and security in mind.



- Intel U300, i3, or i5 CPU
- Up to 32GB RAM
- Up to 256GB flash storage
- Copper RJ45 or Fibre SFP
- Case tamper switches
- Agnostic OS support (Becrypt, IGEL, Stratodesk, Unicon, Windows 10, 11, and IoT, RHEL)

CoreStation RX660 Specifications

Component	Configuration Options
Form Factor	1U rackmount workstation (790mm delth)
CPU	Dual 4 th or 5 th Gen Intel Xeon scalable processors (8 to 64 cores)
Memory	Up to 32 DDR5 UDIMM (4096 GB Max) Memory bandwidth of up to 4800 MT/S
Storage Controllers	Internal Controllers: HBA355i, PERC H355, PERC H755 Internal Boot: Internal USB 3.0, or Boot Optimized Storage Subsystem (BOSS-N1): HWRAID 2 x M.2 SSDs, USB
Graphics (GPU)	NVIDIA RTX A2000 6GB/12GB NVIDIA RTX 4000 ADA 20GB NVIDIA L4 24GB
Networking	Embedded Broadcom 5720 NIC with 2x 1GbE (LOM) Optional Intel or Broadcom Dual 10/25 GbE NIC (fibre or copper)
Drive Bays	14x Hot-swap E3.S NVMe Gen 5 up to 7.6TB with RAID 5/6/10 10x Hot-swap 2.5in U.2 NVMe Gen 5 up to 7.6TB with RAID 5/6/10
OS Support	Microsoft Windows 10 Microsoft Windows 11 Ubuntu Desktop
Embedded Management	Dell iDRAC Enterprise out-of-band management
Power Supplies	Dual hot-swap fault-tolerant or redundant power supplies. Options for 110V/230V AC and -48/240V DC
Dimensions	Height – 42.8 mm (1.68 inches) Width – 482.0 mm (18.97 inches) Depth – 585.3 mm (23.04 inches) without bezel

Contact Us

EMEA Sales

+44 (0) 20 7960 2400
emeasales@amulethotkey.com

N America Sales

+1 212 269 9300
ussales@amulethotkey.com

APJ Sales

+61 409 930 884
apsales@amulethotkey.com